

2024

Community Impact Report



Contents

4 A mission-driven, integrated network

- 6 Part of HCA Healthcare
- 7 HCA Midwest Health by the numbers

8 Serving our communities

- 10 Investing in our communities
- 11 Colleague community engagement
- 12 Partnerships with a purpose
- 20 Environmental stewardship

22 Enhancing care experiences

- 23 Making the grade for quality
and safety
- 25 Convenient access to
comprehensive care
- 28 Providing innovative care

34 Caring for our colleagues

- 36 Supporting education
- 38 Hope Fund: Caring for our own
- 38 Minding colleagues'
mental wellness
- 40 The lighter side of caring
- 43 Partnering with physicians
- 45 Shaping the future of nursing
- 46 Training the next generation
of clinicians
- 53 Cultivating a culture of inclusion

56 Showcasing our hospitals

- 64 HCA Midwest Health locations

Data used in this report is from 1/1/2023–12/31/2023.



Proud to be part of your community

As the region's largest healthcare provider, HCA Midwest Health is honored to be able to provide compassionate, innovative healthcare that ensures healthier tomorrows for our patients, community members and residents throughout Kansas City and beyond. We compile this annual report to highlight our positive impact and how the investments we make in our facilities, services and people ensure HCA Midwest Health continues to meet the needs of our communities.

This report showcases countless examples of how our 10,000-plus colleagues — driven by our collective purpose: *Above all else, we are committed to the care and improvement of human life* — show up for our patients, our communities and each other every day. Through our seven hospitals, 70 physician practices, and dozens of urgent cares, surgical centers and other locations, HCA Midwest Health is proudly setting the standard for delivering consistently safe, high-quality, exceptional care — and being a good corporate citizen, too.

Our dedication to making the economies of the communities we serve stronger is illustrated by our more than \$1.4 billion in direct economic impact in 2023. This includes payroll and benefits, uncompensated care, capital investments, charitable giving and — as one of the few tax-paying healthcare providers in the region — more than \$204 million in local state and federal taxes. This money supports the improvement of schools, roads and critical infrastructure, as well as helping support first responders — vital needs in our community.

We are honored that a well-respected national organization like Healthgrades, which monitors hospital quality, consistently validates the compassionate, quality care we deliver. In fact, three HCA Midwest Health facilities were again named among Healthgrades 250 “America’s Best Hospitals,” and the organization awarded our health system more than 140 other honors for patient safety and specialty excellence.

We also know there are many ways to champion health well beyond the walls of our facilities. And that is why we are partnering with organizations like the American Heart Association to address health equity, Girl Scouts of America to promote mental health wellness among girls, and Harvesters and Kanbe’s Markets to help combat food insecurity within our communities — to name just a few of our key partners. When it matters most, HCA Midwest Health shows up. And it is our privilege to do so for citizens throughout the Kansas City region.

Thank you for continuing to put your trust in us.

A handwritten signature in black ink, appearing to read 'K Zimmerman', written in a cursive style.

Keith V. Zimmerman, FACHE
President
HCA Midwest Health



As part of HCA Midwest Health’s aggressive nurse recruitment and retention efforts, we launched a unique campaign — *The Kind. The Brave. The Driven.* — to meet nurses directly where they are every day. This included innovative ads in grocery stores, impactful social media messaging and bringing coffee trucks on-site at facilities and nursing schools.



A mission-driven integrated network

As Kansas City's leading healthcare provider, HCA Midwest Health is proud of our unwavering commitment to delivering high-quality, compassionate, patient-focused care delivered through some of the most advanced technology, programs and services available.

Striving to make healthcare available to everyone

We know there are many ways to champion health well beyond the walls of our facilities, so when it matters most, HCA Midwest Health shows up.

Every day, we strive to make healthcare accessible to all through our seven hospitals, the largest physician network and more convenient access points than any other area healthcare system — including emergency rooms, outpatient centers, physician practices, urgent cares and surgery centers.

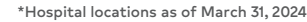
Should one of our regional neighbors need emergency help, we've made significant investments in our transportation services, so we can quickly transport patients to one of our facilities for a higher level of care.

Our doctors, nurses and other medical professionals are committed to improving healthcare in Kansas City and the surrounding areas by implementing innovative, cost-effective care that meets our community's needs today and tomorrow. Our commitment to improving human life above all else is a driving force behind why we are continually investing in cutting-edge technology, expanding facilities and services, and partnering with local charitable and civic groups to provide leadership, funding and support.

As Kansas City's largest private-sector employer, HCA Midwest Health is dedicated to the growth, success and well-being of the communities we serve.

Above all else, we are committed to the care and improvement of human life.

practices that help improve patient care for our communities and beyond.



HCA Midwest Health by the numbers*



10,406 Employees



1,500+ Active physicians
on medical staff



2,462,715 Patient
encounters



264,299 ER visits



5,310 Babies delivered



7 Hospitals



13 CareNow urgent care
centers



8 Surgery centers



10 ERs



1 Managed hospital



1 Burn center



1 Behavioral health center



7 Sarah Cannon
Cancer Centers



145 GME residents



70 Owned physician
practices

*2023 data

Serving our communities

HCA Midwest Health embraces our responsibility to support a significant portion of our local economy. Whether through partnerships with nonprofits or by investing in programs that support well-being and promote equity of care, we are committed to creating healthier tomorrows.

We strive to actively engage and serve as anchor institutions in our communities through our strategic partnerships and community-based relationships.



Dana Scheidt, consulting application analyst, and Tina York, director of physician/provider relations for Lee's Summit Medical Center, were among the nearly 275 colleagues participating in HCA Midwest Health's inaugural Week of Service. Our colleagues provided 600 volunteer hours to benefit 10 area organizations, including Harvesters.



Investing in our communities

Our positive bi-state economic impact helps improve the financial health of the communities we serve. The taxes we pay support the improvement of local schools, roads and other infrastructure.

10,406 people employed*

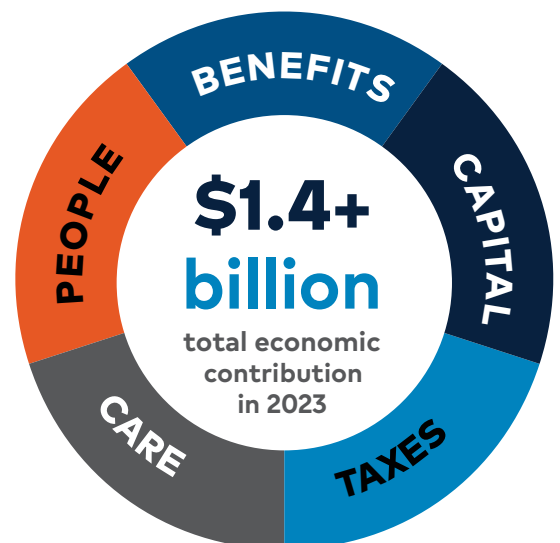
\$1.018B in payroll and benefits*

\$110.7M in capital investments*

\$102.6M provided in uncompensated care*

\$204.4M in federal, state and local taxes paid*

*In 2023



Colleague community engagement

In 2023, HCA Midwest Health colleagues made an impact in our communities through giving and volunteering. Our colleagues are the best example of our mission to care for and improve human life.

2,811 volunteer hours

24 colleagues served on a nonprofit board

128 charities supported through donations and volunteering

\$444K+ in colleague giving with HCA Healthcare matching

We Show Up for our communities

Nearly 275 colleagues and students from Research College of Nursing took part in HCA Midwest Health's inaugural Week of Service in July 2023, demonstrating how we show up for the communities we serve.



600 volunteer hours

10 area organizations supported

Partnerships with a purpose

As a proud community anchor, we're helping the Kansas City region thrive through strategic partnerships with organizations whose missions align with our own. Together, we're dedicated to expanding access to equitable healthcare, addressing food insecurity, funding medical research for lifesaving cures, providing students and adults access to healthcare careers and improving mental health.

\$595K+ in HCA Midwest Health giving to community organizations



The Research Medical Center team turned out on National Wear Red Day to show their dedication to fighting heart disease.



American Heart Association

In 2022, HCA Healthcare and the American Heart Association announced the “Getting to the Heart of Stroke” nationwide initiative to prevent, treat and beat stroke through education and equitably empowering communities to improve health outcomes. In Kansas City, HCA Midwest Health continued building out this initiative with AHA to benefit the communities we serve.

Libraries with Heart initiative

This initiative — developed in partnership with Kansas City Public Libraries and AHA — provides blood pressure testing stations and educational materials.

 **7K** blood pressure checks
by library patrons

Mid-Continent Public Libraries

In 2024, HCA Midwest Health expanded this initiative to several Mid-Continent Public Library locations, as well as to various area churches.

Note: Future expansion plans include Johnson County Library locations with a healthcare speaker series.



DeEtta Lee, senior director of Marketing Communications for the American Heart Association, helped demonstrate one of the new self-test blood pressure stations at a Kansas City Public Library location.

Kansas City Heart and Stroke Walk

HCA Midwest Health continued to lead this annual event as the top fundraising company and Centerpoint Medical Center COO Dan Astleford serving as chair.

 **\$53K+** raised by colleagues
368 colleague walkers

Bilingual health education

To reach Kansas City’s Spanish-speaking populations, HCA Midwest Health partnered with AHA to execute a diverse media grant.

 **\$35K** provided



During our Week of Service, Research Medical Center colleagues made nearly 1,250 sandwiches for Just a Sandwich.

Addressing food insecurity

As part of our commitment to the communities we serve, HCA Midwest Health continues to work with organizations on addressing food insecurity.

Kanbe's Markets

Kanbe's Markets received a Health Equity Catalyst Grant from HCA Midwest Health to support local efforts to provide access to fresh, healthy and affordable foods.

\$25K grant | **~3,400 lbs** food sorted by 40 colleague volunteers



Healthy Foods for Healthier Tomorrows

Five HCA Midwest Health hospitals participated in HCA Healthcare's 2023 Healthy Food for Healthier Tomorrows food and nutrition drive.

Lafayette Regional Health Center won the health system's competition and earned \$10K for the Lexington Food Pantry.

515 lbs food collected | **430** meals provided through collected food

HCA Midwest Health Week of Service

Three area organizations received support for their efforts to combat food insecurity during this inaugural colleague-volunteer event.

Harvesters, the area's largest food bank, welcomed two shifts of volunteers.

Just a Sandwich provides peanut butter and jelly sandwiches to the homeless, domestic violence shelters, those recovering from substance abuse and others in need.

Lexington Food Pantry serves as a regional Harvesters distribution hub.

4.5 tons of food sorted and packed

1,250 sandwiches made

101 families supported with meal kits packed by colleagues



Top left: Representatives from Kanbe's Markets helped showcase the \$25,000 Health Equity Catalyst Grant provided by HCA Midwest Health.

Right: Jessica Popescu was among the 40 HCA Midwest Health and Research College of Nursing colleagues who sorted food at Kanbe's Markets warehouse.

Bottom left: Lafayette Regional Health Center CEO Darrel Box (right) and Pam Johnson, director of business development and marketing, (left) provided a \$10,000 check to a Lexington Food Pantry representative.



Great Jobs KC

This nonprofit provides tuition-free training for adults pursuing careers in various industries, and HCA Midwest Health provided a \$25,000 Partnership Cultivation Grant, which supports community partners focused on developing certification programs for high-demand healthcare roles.



\$25K grant

Leukemia & Lymphoma Society

Through sponsorship and participation in the Light the Night Walk, HCA Midwest Health continues cultivating a deeper relationship with this organization.

Team Clara, led by Lindsey Vickery, a Research Medical Center colleague, was the top fundraiser in the Friends & Family category.

~\$38K raised for Light the Night

207 colleague walkers



\$28K raised by Team Clara

HCA Midwest Health colleagues turned out to walk and raise funds for cancer research during the annual Light the Night event.





Good ‘DEEDs’ support youth development

For **Charlotte Williams-Rice**, supporting Kansas City’s youth is an investment in the future that will pay big dividends down the road for the region and the nation. Her belief in the next generation is what drives the vice president of quality and risk management for Belton Regional Medical Center to support the Delta Educational and Economic Development’s (DEED) Cotillion program.

“As a social worker by training and education, I am enriched, encouraged and enlivened by working with youth,” said Charlotte, who describes herself as a hands-on volunteer. “Youth teach us to see the world from a vantage point of constructive possibilities. With hope and time ahead of them, there are no limitations.”

The Cotillion is a six-month youth development program, co-sponsored by the DEED Foundation and Delta Sigma Theta Sorority’s Kansas City, Missouri, Alumnae Chapter. Over four decades, the program has granted nearly \$2 million in scholarships to enhance the academic, social, cultural and civic awareness and development of graduating high school seniors — primarily from the Black community.

Among her many volunteer duties, Charlotte serves as the organization’s secretary and leads the fundraising and sponsorship committee. Charlotte and other volunteers both loaded and unloaded a 40-foot tractor trailer filled with 10,000 pounds of clothes during a recent clothing drive, benefiting a local thrift organization. Other volunteer activities in which Charlotte participates include student mentoring, helping

students and parents navigate the college application and scholarship application process, community advocacy workshops and projects, and scholarship fundraisers. They provided \$64,000 in scholarships this year alone.

While the benefits the youth receive from the program are apparent, Charlotte notes that volunteers gain just as much in return. “I believe the civic and social impact of Cotillion for students and families is immeasurable,” she said. “The relationships developed among the mentors and protégées truly last a lifetime.”





Community outreach builds connections

When Lafayette Regional Health Center colleagues need someone to champion a community outreach activity they know exactly whom to call: **Kristi Tresler, RN**, director of medical surgical nursing.

“I’ve learned when you meet someone on their doorstep, you build meaningful connections,” said Kristi, who’s worked at Lafayette Regional Health Center for 20 years. “And that helps me see individuals as more than patients when they come to us for treatment.”

A two-time cancer survivor, Kristi was first diagnosed with cervical cancer six weeks following the birth of her youngest child in 2013. Fast-forward to today, Kristi has been cancer-free for more than two years and, despite some lingering chemo-induced neuropathy in her legs and feet, she hasn’t slowed down in giving back and helping others.

A member of First Baptist Church in Odessa, Missouri, Kristi recently finished working on the “I Love Odessa” mission project, which included a food drive to support local food pantries and construction and lawn care projects for those in need. Over the course of two eight-hour

days, 252 volunteers completed 134 projects that included roofing, electrical and plumbing repairs, and more. While a volunteer initiative of this scope might intimidate most folks, Kristi embraces it as her calling.

“By giving of our time, we can be the hands and feet of God in our own community,” she said.

A few years after her first cancer diagnosis, Kristi took a church mission trip to Nicaragua and visited a cancer center. There, she realized her “why” — providing hope to other cancer patients. “With what I had gone through with cancer, I could help them realize their disease did not have to define them,” she said.

Next up on Kristi’s outreach to-do list is a mission trip to West Virginia and continuing to participate in the various community engagement activities planned at Lafayette Regional Health Center. Whatever anyone needs, she’s ready to help however she can.

“I just make myself available and know that my forward-thinking point of view would not be possible without my faith,” she said. “I know there’s a plan and a purpose, and I’m doing exactly what I should be doing.”



Championing mental wellness

HCA Midwest Health supports mental health and wellness in our community through strong partnerships.

EVERFI

HCA Midwest Health continues identifying ways to further support the mental and emotional well-being of kids and adolescents in our community by providing funding for EVERFI's interactive mental health and wellness digital education course for middle and high school students.



1,282 students in
16 Kansas City schools served

Girl Scouts of NE Kansas and NW Missouri

In 2024, HCA Midwest Health partnered with the Girl Scouts of NE Kansas and NW Missouri, along with the National Alliance on Mental Illness (NAMI) in Jackson County, Missouri, and Johnson County, Kansas, to conduct a mental wellness patch workshop for area scouts. The program is aimed at helping girls in fourth to 12th grades identify stressful situations, develop effective coping skills and learn to seek help when needed.



HCA Midwest Health colleagues have helped sort and package medical supplies for Project C.U.R.E., which has become a frequent benefactor of our colleague volunteer events.

Project C.U.R.E.

A system-wide colleague volunteer event to sort medical supplies at this organization's local warehouse supported its efforts to provide supplies to resource-limited communities across the globe.

~100 colleague volunteers

Crush the Crisis

Crush the Crisis is an annual prescription drug take-back event that demonstrates the importance of safe drug disposal while raising awareness about the dangers of abusing prescription drugs. Five HCA Midwest Health facilities were among the 132 HCA Healthcare sites nationwide to collect unused or expired medications.



400 lbs
collected



An officer with the Kansas City, Missouri, Police Department helps collect unused medication at Research Medical Center.

Environmental stewardship

Environmental stewardship is a priority at all our facilities. HCA Midwest Health is committed to sustainability efforts, including upgrading our energy efficiency standards, reducing waste going to area landfills and strictly following safety protocols to ensure the proper disposal of hazardous waste.

In 2023, our hospital teams collected:

- **9,329 lbs** recycled batteries
- **2,926,837 lbs** recycled plastics, metal/aluminum cans, paper, newspapers, cardboard, paperboard
- **120,996 lbs** corrugated cardboard
- **1,818 lbs** universal waste (lamps/bulbs)
- **130,400 lbs** compost
- In total, more than **3.1 million pounds** of recycled products





Providing compassion to canines

As a nurse, **Tara Smith** is driven by a desire to help others and alleviate their pain. But the manager of Case Management for Menorah Medical Center extends that drive well beyond the walls of the hospital to provide compassionate care to those who are perhaps even more vulnerable: dogs.

“Animals are easily subjected to mistreatment, but they are resilient,” she said. “They go through terrible things and are still able to bounce back.”

Tara works with three different animal rescue organizations to help dogs recover from mistreatment. For example, as a first responder for the American Society for the Prevention of Cruelty to Animals, Tara spends one week each year sheltering, cleaning, nurturing and socializing animals that have been in abusive situations. During her service to the organization, she’s traveled to Nevada to assist with the care and sheltering of 300 shepherds previously in an “out of control” unlicensed breeding situation in that state.

“I worked with one dog that was terrified of any interaction but began to slowly show trust. Six months later, this same dog was wagging her tail and begging for attention,” Tara said. “There’s no place I could have done more important work that day.”

Locally, she works with Chain of Hope and Best Friends Animal Society. Through Chain of Hope, she helps alleviate the suffering and abuse of animals in Kansas City’s urban core by educating pet owners on proper care and offering assistance with food and pet care. For the past six years, Tara has helped socialize dogs that have been relinquished, giving them care, cleaning, feeding and sometimes fostering.



The Utah-based Best Friends Animal Society helps relocate animals nationwide from overcrowded facilities to locations where chances of adoption may be higher. Tara assists drivers when they travel through the area by providing dog breaks — playing, walking and loving animals on their relocation journey.

Although Tara has her own two dogs and two cats to care for at home, she said she’s driven to volunteer her time, typically about four days a month, to help other pets in need. “Even after a stressful day or week at work, it’s therapeutic for me,” she said. “These animals just want to be loved and happy. By helping other animals, I can be that crazy animal person without bringing them all home with me.”

In 2023, Tara was recognized as a Menorah Medical Center Awards of Distinction recipient for her work in the community.

Enhancing care experiences

Our approach to delivering safe, high-quality care is rooted in our belief of always doing what is right for our patients and continually living up to our commitment to the care and improvement of human life. As part of HCA Healthcare, we leverage the best practices, technological innovations and new models of care developed from analyzing data gleaned from 43 million-plus patient encounters nationwide.

In 2023, HCA Midwest Health caregivers applied these shared learnings to deliver safe, evidence-based, compassionate care at our hospitals, clinics and other sites of care.

2.4M+ patient encounters



Making the grade for quality and safety

Throughout HCA Midwest Health, our care teams collaborate to integrate best practices, processes and technology to help provide high-quality care and a safe environment for our patients. Our passion for patient safety is unsurpassed in the region and has been validated by multiple organizations that monitor hospital quality, including Healthgrades, a leading marketplace connecting doctors and patients.

Healthgrades recently named four HCA Midwest Health facilities among America's 250 Best Hospitals:

- Research Medical Center
- Overland Park Regional Medical Center
- Centerpoint Medical Center
- Menorah Medical Center

In addition, Centerpoint Medical Center and Menorah Medical Center were each recognized as a Top 50 Best Hospital in the Country for Surgical Care — the only hospitals in the Kansas City region to earn this honor from Healthgrades.



140 Healthgrades recognitions received for patient safety and clinical excellence





Convenient access to comprehensive care

With more than 1,500 physicians on staff, 70 physician practices within our HCA Midwest Physicians network and thousands of physicians who refer patients to our facilities, HCA Midwest Health offers access to clinical expertise and advanced patient-centered care through our more than 150 healthcare sites.

HCA Midwest Physicians

HCA Midwest Physicians is a network of experienced, multispecialty physicians located throughout the Greater Kansas City area. We're proud to offer convenient primary and specialty care — which includes more than 80 medical specialties — within the communities where our patients live and work.



70 employed physician practices

114 locations

~600 physicians and advanced practice providers

Ambulatory surgery centers

HCA Midwest Health's outpatient ambulatory surgery centers (ASCs) offer expert care for routine, complex and emergency procedures. Our ASCs are conveniently located throughout the metro, as well as offer lower costs in many cases.

8

ASC locations

1

new location opening late 2024



13

locations

161K+

in-person visits
performed
in 2023

1,730

telehealth visits
performed
in 2023

3

locations

1

new location
opening in 2025

CareNow urgent care centers

HCA Midwest Health's CareNow urgent care centers provide a wide range of services with the convenience of extended hours, walk-in visits, online check-ins and virtual visits. Patients have fast, convenient and affordable care for minor illnesses and injuries through our CareNow urgent care centers located throughout the metro area. In addition, CareNow offers such services as occupational medicine, sports physicals, drug screening and vaccinations for patients, businesses and community members.

Freestanding emergency rooms

In addition to our seven hospitals, HCA Midwest Health offers freestanding emergency rooms that provide 24/7 care to children and adults throughout Kansas City and the surrounding communities. With short wait times, individuals can find fast, high-quality emergency care when an unexpected, severe injury or illness occurs.

Helping those who help others

Television's Mr. Rogers wisely advised his young audiences to "look for the helpers." But who will help the helpers when they're in need?

Laura Wiruth has made it her mission to be one of those people who provide support for area emergency medical workers. As the regional emergency medical service (EMS) liaison for Overland Park Regional Medical Center, Laura has seen the emotional toll emergency work takes on first responders. She gained valuable firsthand knowledge working in emergency response for more than 20 years.

Laura volunteers with The Battle Within, an organization that creates pathways for veterans and first responders to find resources, time and a community in which to heal. This work allows her to help the helpers.

"I've helped celebrate 'Great Saves' and also seen the stress triggered by emergency work," she said. "It's exhilarating and exhausting. Through my volunteer work, I'm able to help those who consistently help others."

Laura also recognizes the need for more community members to be trained in how to perform first response actions. She serves as president of the Johnson County HeartSafe Foundation, an organization dedicated to increasing the chances of survival after sudden cardiac arrest. The group educates and informs the public about hands-only CPR and how to operate public automated external defibrillators (AEDs). HeartSafe uses group training events throughout the community to teach residents essential skills that can save lives.

"I grew up in a rural community, so I know the challenges you face getting medical care quickly in an emergency situation," she said. "In fact, 62% of cardiac arrests occur in a home or residence, so family members need to be comfortable performing CPR until trained responders arrive."

HeartSafe also refurbishes and places AEDs in neighborhoods, churches, community organizations and schools unable to purchase them. Laura and her fellow HeartSafe board members are on track to place a record number of AEDs in the Johnson County area in 2024.

"There's growing awareness of how important access to an AED can be, especially in schools," she said. "Having community members ready to provide CPR and early defibrillation with an AED is integral to improving the chances someone will survive cardiac arrest."



Providing innovative care

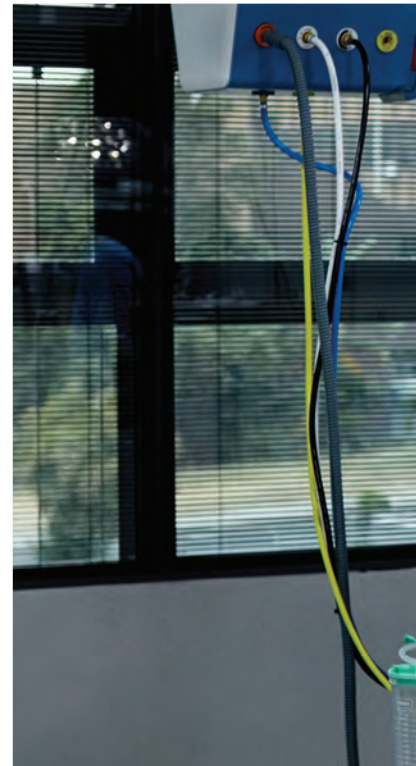
HCA Midwest Health partners across HCA Healthcare's approximately 2,400 sites of care to conduct leading-edge research, share best practices and support, and develop technologies to improve patient care. As a result, patients have access to advanced therapies and services — many of which cannot be found through other Kansas City-area healthcare providers.

Leading heart and vascular care

As the region's heart care leader, HCA Midwest Health is proud to care for the most hearts in Kansas City. Patients throughout the region — and the country — seek our expert comprehensive treatments for all stages of heart disease.

Our cardiovascular and electrophysiology experts are pioneering the latest lifesaving treatments at the HCA Midwest Heart & Vascular Institute and Kansas City Heart Rhythm Institute. They are participating in multiple cardiology clinical trials, as well as bringing the latest technology to area patients. Some highlights of our system include:

- The only heart program in the Kansas City region (and first in Kansas) to offer the photon-counting advanced imaging system.
- The first program in the country to enroll patients in a cutting-edge study to treat inappropriate sinus tachycardia (IST).
- Our accredited chest pain centers routinely exceed the national quality goal of door-to-angioplasty time to treat heart attacks.
- Overland Park Regional Medical Center opened its third electrophysiology lab, making it among the nation's first to adopt next-generation technology for minimally invasive cardiac ablation procedures and the only hospital in the country offering more than one advanced robotic heart care system.
- Kansas City Heart Rhythm Institute offers four new specialty clinics throughout HCA Midwest Health: Atrial Fibrillation Prevention Clinic, Inappropriate Sinus Tachycardia (IST) Clinic, COVID-19 Heart Clinic and Sports Cardiology Clinic.
- Midwest Heart & Vascular Specialists permanently moved its outreach clinic onto the Western Missouri Medical Center campus in Warrensburg, where we are expanding the services offered to that community.





Advancing stroke, neurologic and spine treatments

Our neurological services bring together a diverse array of specialists and programs from across our network to diagnose and treat conditions of the brain, spine and nerves. Through ongoing clinical research trials, we're bringing the latest advances in neurological care to patients throughout the region.

In addition, our accredited stroke centers provide fast, expert care for conditions ranging from stroke-like transient ischemic attacks (TIA) to complex stroke symptoms.



5 accredited
stroke care centers

Patients have access to advanced therapies and services — many of which cannot be found through other Kansas City area healthcare providers.

Caring like family

Imagine after fighting a suspected cold for several weeks, you suddenly faint while grocery shopping. A few days later, you're diagnosed with acute myeloid leukemia. Because your family lives more than 6,000 miles away on a South Pacific island, you feel alone and scared in an unfamiliar hospital.

That was **Anna Liza Dewhurst's** reality in 2003 while studying medical technology at Central Missouri State University (now the University of Central Missouri). Anna Liza ultimately received cancer treatment at Research Medical Center that literally changed her life.

"The Research staff gave me awesome care, and my case manager was so helpful," she said. "My parents didn't have a lot of means, but my case manager found them a place to stay when they were able to make the trip."

The kindness from nurses continued. A member of the Philippine Nurses Association of Greater Kansas City helped Anna Liza's parents become accustomed to the area. And when Anna Liza started outpatient treatment, the nurses helped her family with transportation, groceries and housing.

"If the nurses called and we didn't answer, one of them would drive over to make sure we were OK," Anna Liza said.

The excellent care and kindness from nurses convinced Anna Liza to pursue a nursing career. Today, she's an orthopedic nurse with Centerpoint Medical Center and its Kansas City Joint Replacement and Sports Medicine practice — as well as a proud Philippine Nurses Association member.

Anna Liza pays the kindness forward by volunteering for several activities, including providing health assessments and screenings to Special Olympics athletes, packing medical supplies for Project C.U.R.E. and taking frequent medical missions through the World Health Outreach Foundation of Kansas City, which was founded by Filipino doctors in 1996.

During a mission to the Philippines, Anna Liza provided pre- and post-op care for 60 patients who underwent such surgeries as thyroidectomies, appendectomies, cholecystectomies and hernia repair.

"I worry that so many people are unaware of the preventive things they can do to protect their health," she said. "But people are so grateful when you help, and I want to be the person who guides them to a healthier life. Like our HCA motto, 'Care Like Family,' the people I care for are just like my family."



Sarah Cannon Cancer Institute pioneers cancer therapies

Sarah Cannon Cancer Institute at HCA Midwest Health is a network-accredited cancer program (one of only 63 nationally to earn network accreditation) that provides world-class cancer care to patients throughout the region. We offer innovative clinical research trials to advance cancer care and bring life-changing therapies to patients.

In 2023, HCA Midwest Health experts were actively exploring treatments for blood, breast, gastrointestinal, gynecologic, neurologic and thoracic cancers.



26 clinical trials





Caring for our tiniest patients

As a women's and children's healthcare services leader, HCA Midwest Health is proud to deliver more babies and care for more fragile newborns than any other area health system.

Thanks to our Level III neonatal intensive care units (NICUs) at Overland Park Regional Medical Center, Research Medical Center and Centerpoint Medical Center and a Level II NICU at Menorah Medical Center, critically ill mothers and their babies can find the expert care they need whether they live in Kansas or Missouri. All our NICUs are staffed with neonatologists, neonatal nurse practitioners and infant care specialists.

In addition, our Maternal and Neonatal Transport teams based at Overland Park Regional Medical Center have helped safely transfer hundreds of babies and mothers from throughout the Kansas City region, as well as rural areas of Kansas and Missouri, since this service launched in 2021.

5,310

**babies
delivered***

1,670+

**NICU admissions
in HCA Midwest
Health***



207

**NICU transports
(air and ground)***

117

**maternal
transports
(air and ground)***

*In 2023

The area's robotic-assisted surgical leader

HCA Midwest Health offers the area's most experienced surgical team trained in robotic-assisted procedures and the largest number of robotic-assisted surgical systems. Our experts have performed more than one-third of all robotic-assisted surgeries in Kansas City over the last six years. This means patients have recovered faster and experienced fewer side effects and less pain when undergoing robotic-assisted procedures in such surgical subspecialties as bariatric, bronchial lung biopsy, colorectal, general surgery, head and neck, gynecology, gynecologic oncology, orthopedic, spine, surgical oncology, thoracic and urology.


 **34** robotic-assisted surgical systems

~100 physicians trained in robotic-assisted procedures



Behavioral health

HCA Midwest Health offers a standalone psychiatric hospital, as well as five inpatient and six outpatient behavioral health programs for seniors, adults and adolescents to meet our patients' mental health needs. Our inpatient units feature 18 adolescent and 16 geriatric beds, while our outpatient offerings include a partial hospitalization program, intensive outpatient program and electroconvulsive therapy. In 2023:

 **3,567** inpatients treated

4,602 outpatient visits





Caring for our colleagues

We believe excellent people make excellence happen. That's why we continue to foster a company culture that provides our colleagues with opportunities to thrive. Key in building this culture is providing our colleagues with resources, benefits and programs designed to support their well-being and career satisfaction.



Supporting education

As part of our commitment to workforce development, eligible colleagues can receive financial support for higher education expenses through HCA Healthcare's student loan assistance and tuition assistance programs. Throughout HCA Midwest Health in 2023, colleagues took advantage of these programs in the following ways:

290 received tuition assistance

\$883K+ tuition assistance provided

506 received student loan assistance

\$325K+ student loan assistance provided



Developing our leaders

HCA Healthcare's award-winning Leadership Institute continues the important work of building leaders who embrace our culture, grow the business and lead the healthcare industry. Since its inception in 2014, more than 21,275 colleagues have graduated from the institute.

The Leadership Institute Academy equips leaders to effectively execute strategy, drive operational excellence and lead others to effective action. Participants of the cohort-based program are immersed in highly relevant situations and discussions that enable them to quickly impact business results.



24 high-potential HCA Midwest Health leaders completed the Leadership Institute Academy in 2023

HCA Midwest Health Advanced Leadership Certificate Program

We designed our HCA Midwest Health Advanced Leadership Certificate Program with our colleagues in mind, scheduling weekly in-person classes during their normal work hours, so they don't have to give up weekends or evenings. Created in partnership with Rockhurst University's Helzberg School of Management, the program helps candidates hone their business and management acumen, while earning 12 credit hours toward their MBA from Rockhurst. It's just another way we show up for our colleagues.



17 graduates in 2023

16 enrolled for 2024

Patricia Frist Memorial Scholarships

Named in honor of the late Patricia Frist, a longtime philanthropist in Nashville, Tennessee, and wife of HCA Healthcare co-founder Dr. Thomas Frist Jr., this scholarship program supports dependents of HCA Healthcare colleagues pursuing post-secondary education. Since the scholarship's establishment in 2019, more than \$11 million in scholarships have been awarded to colleague dependents across our organization.

~300 HCA Midwest Health colleagues' dependents have received more than **\$1M** in financial assistance



Hope Fund: Caring for our own

The HCA Healthcare Hope Fund was established in 2005 to give colleagues a way to support each other during unavoidable hardships, including natural disaster, illness, injury, domestic violence or death of a loved one. The Hope Fund has become a deeply appreciated part of our culture as colleagues take pride in caring for our own.

In 2023, the Hope Fund provided HCA Midwest Health colleagues with this support:



\$217K+ in grants distributed

78 grants distributed

1,210 colleagues
contributed **\$225,339**
to the Hope Fund in 2023

Minding colleagues' mental wellness

Our colleagues' mental wellness is a top priority, and we provide a robust benefits package to give our colleagues and their families resources to cope through tough times.

- Free counseling sessions and webinars through Optum
- The Nurse Care helpline
- Fertility and family building benefits
- Financial perks through preferred banking partners
- Our colleague recognition program

Pastoral Care meets patients where they are

The **Rev. Rachel Greiner** wants to shatter traditional stereotypes about hospital chaplains. “Patients either think you’re going to lead them to Jesus, or you’ve come to tell them they’re dying,” said the director of pastoral care and clinical pastoral education (CPE) at Research Medical Center. “But neither is true.”

Rachel manages a team of certified chaplains and helps train future chaplains through CPE. A 12-year HCA Healthcare veteran, she has served patients and staff at Research Medical Center for the past two years. She said patients often come to her seeking answers to such serious questions as, “Why did I get cancer? What does the future look like? Does God still love me?”

While Rachel and her team struggle to provide answers, they instead help patients explore the bigger issues behind the questions. “We try to meet patients where they are in a way that allows them to come to their own conclusions. In the end, that’s what matters,” she said.

To better meet the needs of the hospital’s diverse patient population, Pastoral Care includes trained professionals of the Buddhist and Christian faiths who speak Spanish, Chinese, Taiwanese and English. Having a diverse staff and expanding their cultural awareness allows the Pastoral Care team to better connect with patients — and community members — which helps elevate the overall care experience. The team also consults an advisory committee, which includes a local rabbi and imam, for guidance on navigating cultural sensitivities.



During a recent ecumenical memorial service, participants sang a hymn in Chinese and sang a reading from the Torah in Hebrew.

“There’s great comfort in hearing the sound of your native tongue,” Rachel said. “But there have also been circumstances where we don’t understand the language, and yet we can still provide supportive care. Grief is a universal language, and you can communicate empathy without saying a word.”

In addition to patients, Pastoral Care also tends to colleagues’ needs and provides support in the form of one-on-one conversations, small-group discussions and educational programming. Their goal is always the care and improvement of human life.

It’s both the challenges and affirmations found in healthcare that drive Rachel as a faith leader. While she started her training in parish ministry, it was a semester in clinical pastoral education that really spoke to her. “In a hospital setting, we see amazing, life-affirming things,” she said. “I find connection and meaning here in chaplaincy.”

The lighter side of caring

To help our care teams decompress from their jobs, HCA Midwest Health facilities came up with creative solutions to blow off steam. From costume celebrations and roving treat carts to pet snuggles and friendly competitions, we made sure our colleagues knew they were appreciated and valued.







Teaching others to save lives

If Lee's Summit needed an official ambassador, **Shelley May's** name would be at the top of the list. Shelley has lived in the Kansas City suburb her entire adult life, raised her family there and worked as a registered nurse at Lee's Summit Medical Center for more than 16 years. She's also been a school nurse in the Lee's Summit School District and has taught basic lifesaving (BLS) to medical professionals, countless community members and organizations throughout her career.

And if that's not enough, she also finds time to work and volunteer at a nearby botanical garden. And should a friend, family member or neighbor need help, she's there to lend a hand.

So, when Lee's Summit Medical Center needed a ST-segment elevation myocardial infarction (STEMI) coordinator, Shelley was the obvious choice. "I love Lee's Summit Medical Center — this is my home," she said. "Part of my role is to teach people about the chain of survival, and CPR is a critical part of this."

Her lifelong involvement in the area and her 30-year nursing career made it almost second nature for her to teach hands-only CPR to members of the Lee's Summit community and beyond. Day care centers, Meals on Wheels volunteers, banks, the Chamber of Commerce, small businesses and schools — they've all benefitted from Shelley's training. In fact, she reaches several hundred trainees each month.

"Hands-only training is easy, and by eliminating the mouth-to-mouth component of CPR, more people are willing to give it a try," she said. "It's so rewarding to create a safer community for all of us. CPR is the first step in saving a life."

Shelley often receives comments from community members about the benefit of her training and how it allowed them to help someone in need. Because approximately 65% of heart attacks occur in a home or residence, the training will likely benefit someone's friend or family member. Her most challenging audience? Sixth through 10 graders. Shelley has trained

this demographic at career days, Take Your Child to Work Days and youth organizations.

"They are either incredibly bored or incredibly enthusiastic," she said. "But when we put on a song with 100 beats per minute — whether it's 'Stayin' Alive' or something by Taylor Swift — you can feel the energy and enthusiasm shift."

And that's important, because anyone can save a life with hands-only CPR. And Shelley is making sure they know how.



Partnering with physicians

With 70 physician practices within our HCA Midwest Physicians network, more than 1,500 physicians on our medical staffs and more than 5,000 physicians referring patients into our facilities, HCA Midwest Health offers the clinical

expertise and resources to deliver advanced patient-centered care. We believe partnering with and empowering our physicians to deliver exceptional care is the best way to guide advances in medicine across our network.



Shaping the future of medicine

As the nation's leading sponsor of graduate medical education (GME) programs, HCA Healthcare onboarded one of the largest incoming classes of residents among U.S. teaching hospitals in 2023. The new class of residents and fellows spend time within their GME program treating patients in a real-world environment and will gain access to fulfilling career opportunities across HCA Healthcare.

Throughout HCA Midwest Health, our seven GME programs — all accredited by the Accreditation Council for Graduate Medical Education — attract residents and fellows from throughout the United States and prepare them for a career in medicine.

In addition to our robust GME program, HCA Midwest Health also partners with Kansas City University to host medical students through

clerkships. Clerkships are a unique, immersive clinical learning experience, where students train under the direct supervision of an experienced attending physician. They also have opportunities to work alongside current GME residents. In 2023, HCA Midwest Health hosted 380 Kansas City University students.



In 2023, HCA Midwest Health had 145 residents training in:

- Family medicine
- General surgery
- Internal medicine
- Obstetrics/gynecology
- Orthopedic surgery
- Cardiology



Shaping the future of nursing

Nurses are the heart of our organization. We are actively implementing and offering resources, development and education to support nurses in their day-to-day work. This commitment helps HCA Healthcare and HCA Midwest Health nurses today while shaping the future of the profession.

Building our team

We continue to invest significantly in the recruitment and retention of quality nurses, while embracing innovative care models to help reduce their burden and ensuring they have the necessary support and resources. We've expanded our care teams to include licensed practical nurses/vocational nurses (LPN/LVN), paramedics and nurse externs.

In 2023, we continued aggressive recruitment efforts to bolster our 3,000+ nurses by implementing initiatives like our highly successful Employee Referral Program. We've also cultivated strong relationships with more than 100 nursing schools throughout the area. In 2023, HCA Midwest Health welcomed:

206 experienced registered nurses **222** graduate nurses **273** nurse externs

Celebrating our excellent nursing units

The annual HCA Healthcare Unit of Distinction Award Program recognizes and rewards exemplary nursing units and celebrates how nurses are achieving top outcomes. Nursing Units of Distinction meet rigorous requirements and are considered to be in the top percentile of all HCA Healthcare nursing units nationwide. In 2023, HCA Midwest Health had eight nursing units recognized, including:

#1 Centerpoint Medical Center's NICU ranking within HCA Healthcare



Centerpoint Medical Center Chief Nursing Officer Suzanne Ford and Director of Women's Services Jenine Evinger attended the HCA Healthcare Unit of Distinction Award ceremony to celebrate the hospital's NICU ranking No. 1 within the organization.

Training the next generation of clinicians

To deliver the excellent care patients deserve, HCA Healthcare supports our colleagues in their practice through effective and accessible clinical and leadership education.



In celebrating Nurses Week, the Overland Park Regional Medical Center team also celebrated nurse leaders Kristina Sauder (left) and Katherine Baum (right) earning their master's in nursing degrees.

Nursing Leadership Certificate Program

Designed for clinical nurse coordinators, or charge nurses, this nine-session program helps nurses develop key leadership skills to help them thrive as nursing leaders. The Nursing Leadership Certificate Program is self-paced, which allows nurses to sign up for sessions conveniently scheduled at facilities throughout HCA Midwest Health that best fit their schedules.



55

nurses completed the program in 2023

HCA Nurse Residency Program

Formerly called the StaRN program, the Nurse Residency Program provides intense post-graduate training to newly licensed nurses. The 12- to 23-week program combines classroom instruction, a robust simulation experience and hands-on clinical training for nurses specializing in the medical/surgical, telemetry, intensive and progressive care units, and emergency and operating room areas.



380

colleagues completed the program in 2023

From student volunteers to nursing colleagues

While healthcare providers everywhere face challenges recruiting and retaining nurses, we're taking a grassroots approach to the challenge by reaching out to the next generation of colleagues while they are still in high school.

Take our program at Belton High School, for example, where an average of 15 students each year volunteer at Belton Regional Medical Center three times a week.

The students deliver blankets and water to patients, observe clinical procedures and shadow pharmacists to learn more about their jobs.

"The program is designed to ignite high school students' passions through career-themed academies and real-world learning experiences," said Chief Nursing Officer Robyn Miller. "This will better prepare them for success in life."

Hospital staff also routinely attend career fairs at the school and participate in student roundtables and projects to help further highlight career options. Recently, students participated in a mock mass casualty drill at the hospital for a simulated glimpse into how healthcare workers respond in an emergency.

Beyond exposing students to the variety of healthcare careers, a lasting



relationship is formed that helps the hospital recruit students upon graduation. For example, Belton Regional Medical Center has hired seven patient care technicians — all of whom have a 100% retention rate to date.

"During students' volunteer experience, they gain visibility into such areas as pharmacy, radiology, surgery and patient care," Robyn said. "Through close collaboration, we assess if there's a cultural fit which makes a longer-term engagement more seamless. Our student volunteers are high achievers, and many want to continue their education in healthcare, including nursing."

And to support that, we offer financial assistance to help them gain a nursing degree or clinical certification so they can start and continue their career at HCA Midwest Health.

StarTECH Patient Care Technician (PCT) Program

This five-week training program, which includes classroom and clinical preparation, is an integral part of the HCA Healthcare Clinical Standards of Excellence. It's an excellent pathway for high school graduates or second-career individuals seeking a patient technician career at one of our Kansas City area hospitals.

169

individuals
completed the
program in 2023



PCT (Patient Care Technician) Lead Leadership Program

Designed to help PCT leaders lead their teams as well as provide great patient care, this 30-hour program consists of eight sessions that center on crucial conversations, supervisory skills, coaching, influencers and other topics. Through the program, PCT leads share best practices to improve operational efficiencies and improve PCT retention throughout HCA Midwest Health.

15

colleagues
completed the
program in 2023

In addition, our facility-based PCT Councils further elevate our PCT colleagues, providing them with leadership opportunities and a way to share their voices throughout our organization. The councils provide division and facility leaders with valuable input on the needs of our PCT colleagues, which in turn supports our broader retention strategy for this critical caregiver position.

FastTrack Pathway to Clinical Care

HCA Midwest Health launched the FastTrack Pathway to Clinical Care program in 2021, allowing colleagues to earn an associate's degree for non-license-required positions through a partner community college for no out-of-pocket tuition costs. The program has since expanded throughout HCA Healthcare, and more than 640 HCA Healthcare colleagues have begun their journey toward a clinical degree. Throughout HCA Midwest Health:

118

colleagues have completed
the program since 2021

79

colleagues enrolled in
the program for 2024

Research Medical Center School of Radiologic Technology

This fully accredited, 23-month program prepares individuals to sit for the American Registry of Radiologic Technologists examination and become entry-level radiographers, as well as provides the academic requirements for those seeking a career as a computed tomography technologist. Graduates of the Research Medical Center School of Radiologic Technology routinely achieve the highest programmatic test results in the nation. In 2023:



12 students graduated from the program

6 accepted full-time positions
at Research Medical Center





Research College of Nursing

Trusted for more than 115 years, Research College of Nursing is an accredited institution preparing nurses to thrive in complex healthcare environments. The college offers a bachelor of science in nursing (BSN) in a one-year accelerated track (bachelor's degree required) or a two-year track with prerequisites required. Incoming BSN students can take advantage of a loan forgiveness program, which offers up to 75% assistance.

Research College of Nursing continues its proud tradition of helping students seamlessly transition into their nursing career, thanks to the strength of the region's leading healthcare system, HCA Midwest Health. In fact, the college boasts a 100% success rate of having BSN students employed six months after graduation.

In 2024, Research College of Nursing ranked No. 7 Best Nursing School in Missouri and No. 1 in Kansas City, Missouri, by *Nursing Schools Almanac*.



303

students enrolled

82% BSN • 18% MSN

Enrollment by track

58% traditional BSN

42% accelerated BSN

91% BSN graduates receiving loan forgiveness

*Data current as of Fall 2023

Expanding nursing education access

Research College of Nursing's award-winning academic practice partnership with Research Medical Center has become a model of excellence for HCA Healthcare facilities across the nation.

In fact, on a larger scale, HCA Healthcare continues expanding access to nursing education and enhancing the pipeline of nurses throughout the country. HCA Healthcare has opened 14 Galen College of Nursing campuses across the country. In addition to Research College of Nursing programs, HCA Midwest Health colleagues can take advantage of Galen's online programs to further their education.

In 2023, HCA Midwest Health announced a comprehensive \$34.5 million investment in Research College of Nursing. Part of this investment includes the creation of a 78,000-square-foot Center for Clinical Advancement, which pairs modern education facilities with simulation opportunities to help clinicians bridge the gap between classroom learning and bedside care. This significant capital investment will not only provide for additional physical space and innovative new education resources, it will also boost the college's capacity to prepare future nurses — nurses we hope to welcome to our HCA Midwest Health family.

Taking care of underserved communities

As one of the area's leading nursing schools, Research College of Nursing enjoys a rich history of community outreach. Our health equity and community access programming provide hands-on opportunities for students to expand their awareness of health issues facing underserved populations.

“Participating in health screening activities gives students insight into under-resourced communities with limited access to healthcare services,” said **Maithe Enriquez, PhD, APRN**, associate dean for graduate education, research and community partnerships. “Such experiences help prepare students for their future nursing careers.”

Through a partnership with Welcome Wellness Health Education and Resource Center, a nonprofit in Belton, Missouri, RCoN provides approximately eight half-day screenings per semester in neighborhood venues, such as churches. Participants are screened for Type 2 diabetes mellitus, dyslipidemia and hypertension. Interpreters help participants who are English language learners or who have language needs. Thanks to the partnership, 306 individuals received free screenings in the second half of 2023.

Because foot care is often neglected among unhoused individuals, RCoN also partners with Artists Helping the Homeless once per semester to conduct foot care screenings at Mill Creek Park. The event includes a free meal, provided by Artists Helping the Homeless, and attendees receive a foot care kit. About 30 people also receive foot health screenings.

Both outreach efforts are funded by a grant from the Missouri Board of Nursing to enhance community health experiences for nursing students.



Students are also involved in a pilot intervention project that is funded by The Research Foundation and private donations to Welcome Wellness Health Education and Resource Center. The seven-week intervention program targets Hispanic adults with pre-diabetes or Type 2 diabetes mellitus. The project aims to increase engagement in healthful behaviors that can normalize/lower hemoglobin A1C and enhance diabetes health outcomes.

“Hispanic people are predisposed to Type 2 diabetes mellitus,” said Dr. Enriquez. “Based on input from community members, we hold the intervention program on Sunday afternoons to make it more accessible for people with daytime/evening jobs to participate. Our goal is to meet people where they are.”

Through participation in these valuable programs, Dr. Enriquez believes students will enter their professional careers with a greater awareness of the inequities that exist in healthcare access and be better able to provide culturally competent care.



Cultivating a culture of inclusion

Creating an environment where everyone has a chance to succeed and grow is embedded in who we are as an organization and guides how we care for our patients, support our colleagues and serve the community.

Colleague Networks engage our people to drive change

Our Colleague Networks program is open to all colleagues and provides a safe space for colleagues to discuss challenges and opportunities and to engage them in driving meaningful change throughout our organization.

We believe Colleague Networks have a tangible impact on colleagues' strong connection to our organization. In fact, results of our engagement survey showed that colleagues who were engaged with a Colleague Network have a higher sense of belonging to our organization compared to other colleagues.

These voluntary, colleague-led groups include:

- Asian and Pacific Islander Colleague Network
- Black Colleague Network
- Diversability Colleague Network
- Hispanic/Latinx Colleague Network
- LGBTQ+ Colleague Network
- Mental Health and Wellness Colleague Network
- Veterans Colleague Network
- Women's Colleague Network
- Young Professionals Colleague Network



500+

active

Colleague Network
participants



Committed to caring and improving human life

Taking care of others is what we do best. HCA Midwest Health colleagues care for you like family because we are not just caregivers — we are your neighbors. Through facility- and system-based activities, our colleagues are fully engaged to ensure healthier tomorrows for everyone in our communities.





Showcasing our hospitals

We offer more than 150 sites for medical care and an array of services to meet the demands of Greater Kansas City's growing healthcare needs with easy access.



Research Medical Center

Kansas City, Missouri ResearchMedicalCenter.com

One of the region's leading acute care hospitals, Research Medical Center is a 590-bed facility offering specialized, state-of-the-art services, including an ACS Verified Level I trauma center, Level I STEMI and Level I Time Critical Diagnosis services for brain and spinal cord injuries, sepsis, stroke and heart attack. Research Medical Center features the region's first accredited stroke center, burn center, Sarah Cannon Cancer Institute and The Transplant Institute. Also affiliated with Research Medical Center is the Research Brookside Campus, Research Psychiatric Center and Research College of Nursing.



#1

Ranking for stroke care in Missouri by Healthgrades



Designated a Comprehensive Cardiac Center by The Joint Commission and the American Heart Association



13%

Behavioral health admissions increase, reflecting our efforts to combat the mental health crisis

590

beds

636

physicians

2,100

employees

30

volunteers



Overland Park Regional Medical Center

Overland Park, Kansas OPRMC.com

Overland Park Regional Medical Center offers specialty care for patients of all ages. As a premier area healthcare destination for women and children's services, we offer the region's most-advanced neonatal intensive care unit (NICU), the metro's only Fetal Health Center, and a dedicated pediatric emergency room and inpatient unit. Serving as Johnson County's only accredited trauma center, the hospital provides access to outstanding emergency services, including stroke and heart attack care. The hospital's cardiovascular program is nationally recognized and is home to some of the most advanced heart care in the region.



#1

Johnson County's only trauma center



2,295

Electrophysiology procedures performed annually by the region's largest, most advanced EP program



41.5

Average number of babies cared for per day in Kansas City's busiest specialty NICU

383

beds

648

physicians

1,518

employees

30

volunteers



Centerpoint Medical Center

Independence, Missouri CenterpointMedical.com

A 285-bed acute care hospital, Centerpoint Medical Center features a Level II Trauma Center, 24/7 emergency department, accredited Chest Pain Center, certified Stroke Center, premier birthing center with Level III NICU and a 16-bed inpatient rehabilitation wing. The Joint Commission has recognized Centerpoint Medical Center as a top performer in key quality measures, including heart attack, heart failure, pneumonia and surgical care and has awarded Centerpoint with its Gold Seal of Approval accreditation.



62K

Annual visits to the emergency department



1,425

Trauma activations through the Level II Trauma Center



4 years

Consecutive annual recognition among Healthgrades' 250 Best Hospitals

285

beds

600

physicians

1,600

employees

60

volunteers



Menorah Medical Center

Overland Park, Kansas MenorahMedicalCenter.com

Menorah Medical Center offers some of the most advanced treatment options available in the Kansas City area, including oncology care at the Sarah Cannon Cancer Institute at Menorah Medical Center. The hospital is also an accredited chest pain center, certified stroke center, accredited breast center and features a nationally recognized bariatrics program. Menorah Medical Center is a leader in minimally invasive and robotic surgeries and also home to some of the area's premier surgeons for complex neurosurgeries, colorectal procedures, as well as bone and joint replacement and sports medicine procedures.



7,000

Elective surgeries performed in 2023



2 years

Number of consecutive years named among Healthgrades' America's 50 Best Hospitals for Surgical Care™



16,180

Total visits to the Emergency Department in 2023

190

beds

550

physicians

1,144

employees

38

volunteers



Lee's Summit Medical Center

Lee's Summit, Missouri [LeesSummitMedicalCenter.com](https://www.LeesSummitMedicalCenter.com)

Lee's Summit Medical Center offers advanced treatment options using some of the most advanced technology, including three surgical robots, a hybrid operating room, state-of-the-art imaging equipment and more. The hospital offers 24/7 emergency care, is a certified primary stroke center and has earned Level II designation by Missouri's Time Critical Diagnosis System for treating heart attacks and stroke. Lee's Summit Medical Center has also been recognized for excellence in patient safety by Healthgrades. The hospital continues to expand our campus and services to ensure we always meet the healthcare needs of a growing community.



~\$75 million

Recently allocated for capital investments to expand technology and services



4,000+

Total robotic-assisted surgeries performed to date



129

Total number of physicians trained through the hospital's GME program

88

beds

481

physicians

660

employees

45

volunteers



Belton Regional Medical Center

Belton, Missouri [BeltonRegionalMedicalCenter.com](https://www.beltonregionalmedicalcenter.com)

Conveniently located at Interstate 49 and U.S. Highway 58, Belton Regional Medical Center is an 85-bed acute care hospital that was established in 1984 to provide the citizens of southern Jackson and northern Cass counties access to essential health resources. Having invested more than \$63 million over the last decade to meet the community's growing healthcare needs, the hospital offers a full range of inpatient and outpatient services, supported by excellent staff, advanced technology and deep relationships within the community.



\$1 million+

Invested into Sarah Cannon Cancer Center renovations, technology and imaging equipment



30,659

Emergency department visits last year



466

Robotic-assisted surgeries performed last year

85

beds

343

physicians

408

employees

28

volunteers



Lafayette Regional Health Center

Lexington, Missouri LRHC.com

Accredited by The Joint Commission, Lafayette Regional Health Center is a critical-access hospital located 50 miles east of Kansas City. This primary care hospital offers a comprehensive array of services and high-quality care, including 24/7 emergency care, in a small town environment. Lafayette Regional Health Center also owns and operates three physician clinics throughout Lafayette County, where more than 35,000 patients received treatment in 2023. In addition, the hospital offers a rehabilitation facility.



\$830K+

Total provided in charity and uncompensated care



21K+

Patients treated through the outpatient specialty clinic



8K+

Patients treated through the emergency department

25

beds

212

physicians

255

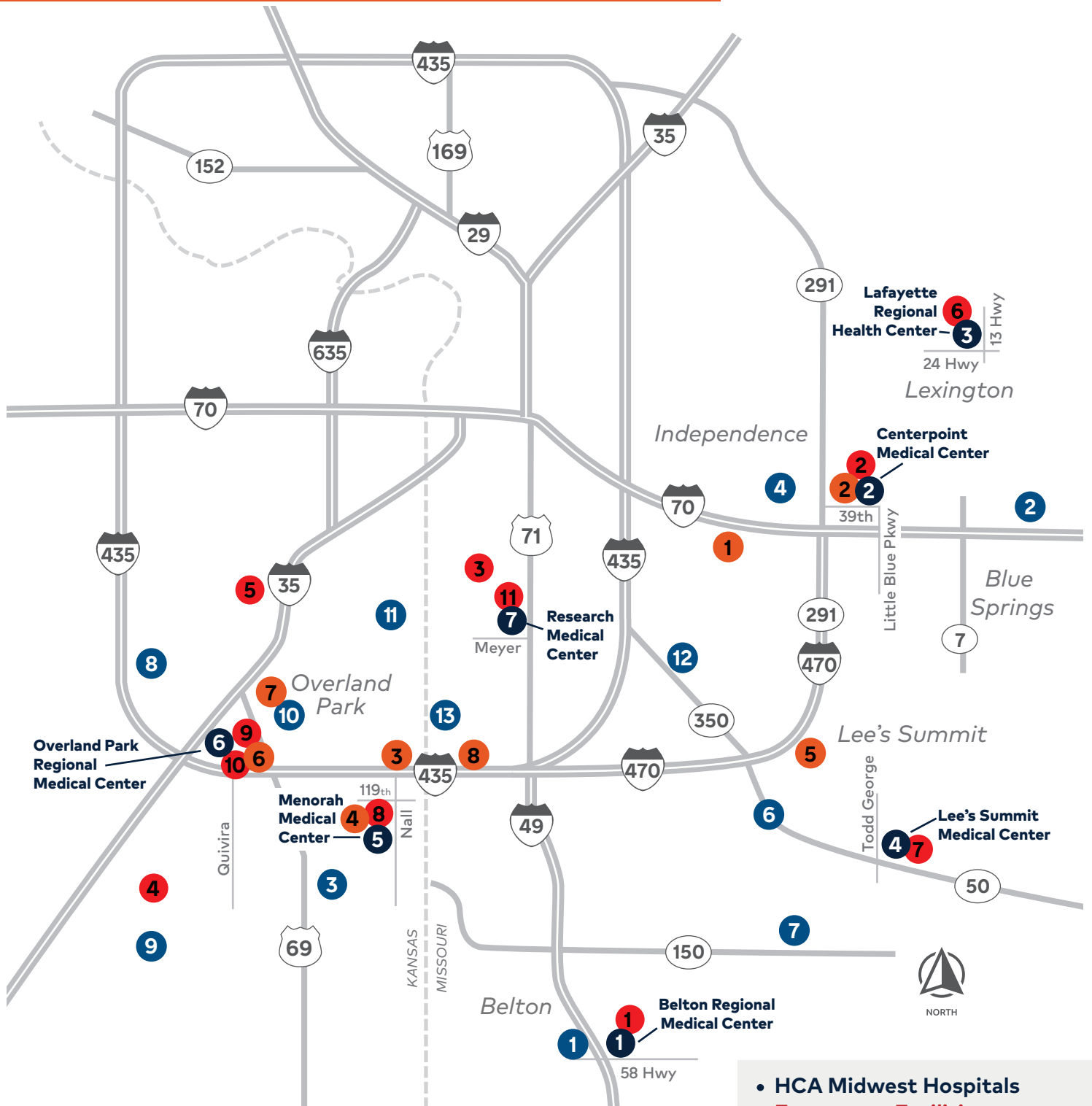
employees

22

volunteers

HCA Midwest Health locations

Kansas City Metropolitan



► Hospitals

1. Belton Regional Medical Center
2. Centerpoint Medical Center
3. Lafayette Regional Health Center
4. Lee's Summit Medical Center
5. Menorah Medical Center
6. Overland Park Regional Medical Center
7. Research Medical Center

► Emergency locations

1. Belton Regional Medical Center
2. Centerpoint Medical Center
3. ER of Brookside
4. ER of Olathe
5. ER of Shawnee
6. Lafayette Regional Health Center
7. Lee's Summit Medical Center
8. Menorah Medical Center
9. Overland Park Regional—Main ER
10. Overland Park Regional—Pediatric ER
11. Research Medical Center

► Urgent care centers

1. CareNow Belton
2. CareNow Blue Springs
3. CareNow Corbin Park
4. CareNow Independence
5. CareNow Independence West
6. CareNow Lee's Summit
7. CareNow Lee's Summit South
8. CareNow Lenexa
9. CareNow Olathe
10. CareNow Overland Park North
11. CareNow Prairie Village
12. CareNow Raytown
13. CareNow State Line

► Ambulatory surgery centers

1. Blue River Surgery Center
2. Centerpoint Ambulatory Surgical Center
3. College Park Surgery Center
4. Mid-America Surgery Institute, LLC
5. Midwest Pain Management Center
6. Overland Park Surgery Center
7. Surgicenter of Johnson County
8. Surgicenter of Kansas City

► Physician practices

Bariatric and Metabolic Specialists
Center for the Relief of Pain
Centerpoint Orthopedics
Centerpoint Physicians Group
College Park Family Care Center
Colorectal Surgical Associates
Family Care at Arbor Walk
Family Care of Eastern Jackson County
Family Care of Independence
Family Health Medical Group
Family Health Specialists of Lee's Summit
Goppert-Trinity Family Care
Internal Medicine Associates of Kansas City
Johnson County Neurology
Kansas City Heart Rhythm Institute
Kansas City Joint Replacement and Sports Medicine
Kansas City Neurology Associates
Kansas City Ob Gyn
Kansas City Pulmonology
Kansas City Vascular & General Surgery
Kansas City Women's Clinic
Kansas Pulmonary & Sleep Specialists
Lee's Summit Family Care
Lee's Summit Family Medicine
Medical Group of Kansas City
Menorah Pulmonary and Critical Care Consultants
MidAmerica Cancer Care
Midwest Breast Care
Midwest Cardiovascular & Thoracic Surgery
Midwest Heart & Vascular Specialists
Midwest Neurology Physicians
Midwest Oncology Associates
Midwest Perinatal Associates
Midwest Psychiatric Consultants
Neuroscience Associates of Kansas City
Neurosurgery Associates of Jackson County
Neurosurgery of South Kansas City Medical Group
Overland Park General & Bariatric Surgery
Overland Park General & Trauma Surgery
Overland Park Neurology & Sleep Medicine
Pediatric Surgical Specialists
Premier Gastroenterology of Kansas City
Quivira Internal Medicine
Research Neurology Associates
Research Neuroscience Institute
Research Transplant Institute
Research Urology Associates
Southland Primary Care
Statland Medical Group
Town Plaza Family Practice
Town Plaza Women's Health
The Urogynecology Center
Women's Center at Lee's Summit



Cass Regional Medical Center

Harrisonville, Missouri CassRegional.org

Cass Regional Medical Center is a county-owned critical access hospital located 30 miles south of Kansas City, Missouri. Accredited by The Joint Commission, the hospital offers a comprehensive array of services, including a Level III trauma center, a 10-bed geriatric-psychiatric unit, a four-bed ICU, 21 medical-surgical beds, and primary and specialty clinics offered in Harrisonville, Pleasant Hill, Peculiar, Archie, Garden City and Kingsville.



\$13.6 million

Total provided in charity and uncompensated care annually



124,525

Patients served on an outpatient basis



46,213

Patient visits completed at the hospital's clinics

35

beds

271

physicians

460

employees

26

volunteers

